

7.3. 1 Any other relevant information

ORGANISATIONAL AND FUNCTIONAL STRUCTURE OF LEGAL AID SOCIETY

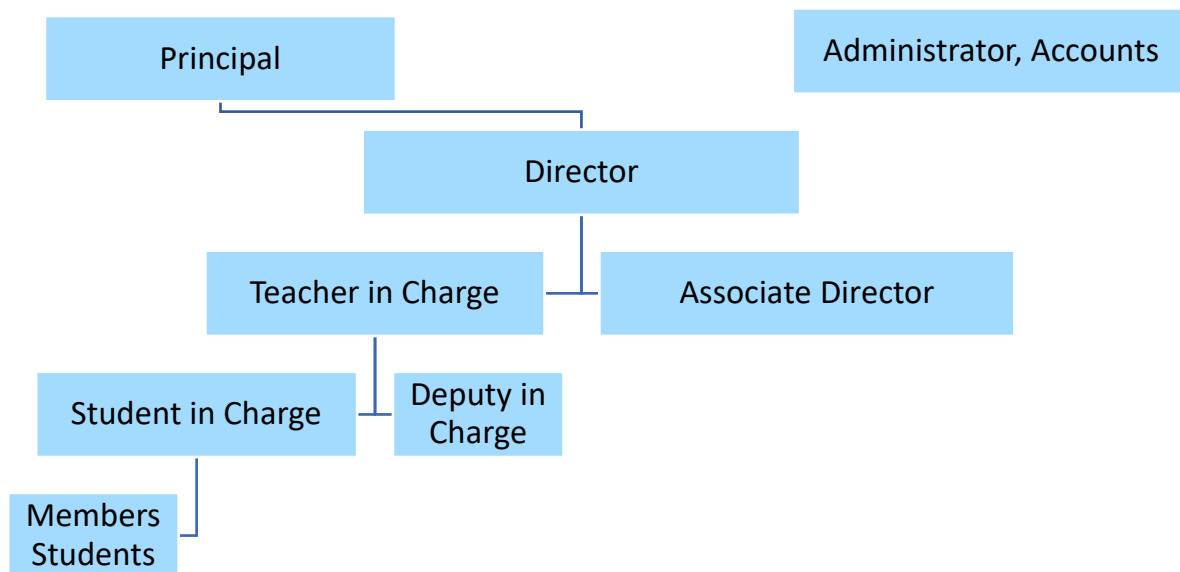
Duration: All the students are required to be part of the legal aid activities for two years and complete 100 hours of legal aid work.

Location: The cells are located at their residential vicinity in places which are easily accessible to the general public like Panchayat buildings, schools, churches or temple premises.

Timing: Every Saturday, the cells function for minimum of two hours and are open to general public.

Organisational structure: The activity is administered through a well-knit, organizational structure, where decision making is devolved to the end level of the hierarchy.

The Functional Hierarchy



Links to our webpages/ blogs related to Clinical Legal Education

Legal Aid Society - webpage	https://vmslaw.edu.in/legal-aid-society/
List of legal aid cells and Students in charge	https://vmslaw.edu.in/legal-aid-cell/
Awards	https://vmslaw.edu.in/awards/
Child Rights Clinic	https://vmslaw.edu.in/child-rights-clinic/
Legal Aid Society Blog	https://vmscllegalaidsociety.blogspot.com/
ADR Board Blog - VMSCL CONCORD	https://vmsclconcord.blogspot.com/
Lex Infinitum	https://vmslaw.edu.in/lexinfinitum/

